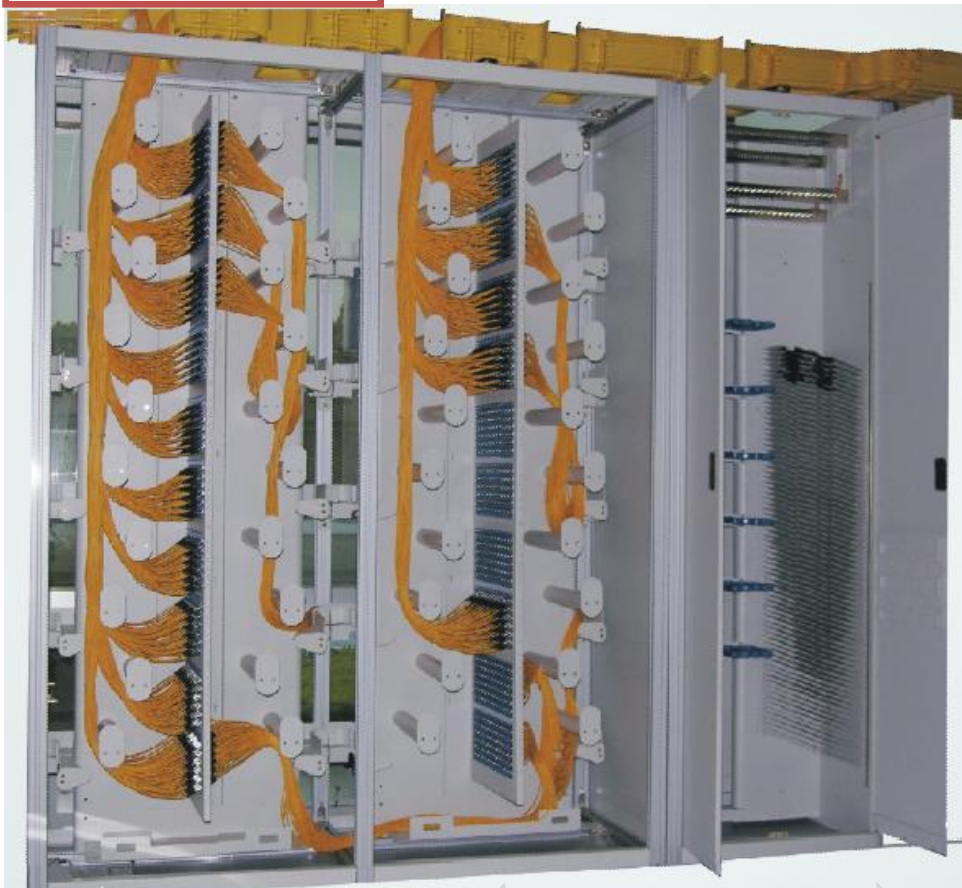


Optical Fiber Distribution Frame

(LongXing Ref: GPX82-6C)

China patent No.:
2008810063579.0



Expansion
Distribution Frame

Basic Distribution
Frame

Integrated
Splice Frame

Generated on 11 Aug 09

All drawings, designs, specifications, plans and particulars of weights, size and dimensions contained in the technical or commercial documentation of LongXing is indicative only and shall not be binding on LongXing or be treated as constituting a representation on the part of LongXing.

Descriptions:

- Splice and distribution are separated;
- This frame comprises optical fiber distribution frame(basic and expansion frames), integrated splice frame;
- Compact structure and distinct layer for convenient management;
- This frame is suitable for both common bundle cables and ribbon type cables;
- High density and big capacity: 720cores/frame(Height: 2200mm);
- Horizontal fiber support groove: double-layered structure, the top is for optical fiber patch cord passing, below is for pigtail;



Optical Cable Inlet
Module (Multilayered)

- Cable inlet can subject to different requires, divided into single-layered and double-layered;
- Frisbee style (UFO style) splice tray is adopted, double layered structure, closed protection, capacity of 12 cores per tray. Frame-retardant materials used. Curvature radius of fiber over 40mm..



China patent No.:
200310121641.4



Optical Cable Inlet
Module (Single Layered)

Generated on 11 Aug 09

All drawings, designs, specifications, plans and particulars of weights, size and dimensions contained in the technical or commercial documentation of LongXing is indicative only and shall not be binding on LongXing or be treated as constituting a representation on the part of LongXing.

Operation conditions:

- Temperatures: -5°C ~ 40°C
- Humidity: ≤85% (at 30°C)
- Air Pressure: 70kPa – 106kPa

Dimensions and Capability:

Description	Dimensions H*W*D(mm)	Capacity	Remark
Integrated Splice Frame	2200*900*600	12cores/tray, 720cores/frame	6-position adapter manager is adopted
Basic Distribution Frame	2200*840*600	12cores/tray, 720cores/frame	
Expansion Distribution Frame	2200*840*600	12cores/tray, 720cores/frame	

Contact:

International Trade Department
18, Anju Road, Beilun District, Ningbo, China
Direct: +86 574 87917627
Email: info@nblxtelecom.com
Web: www.lxtelecom.com

Generated on 11 Aug 09