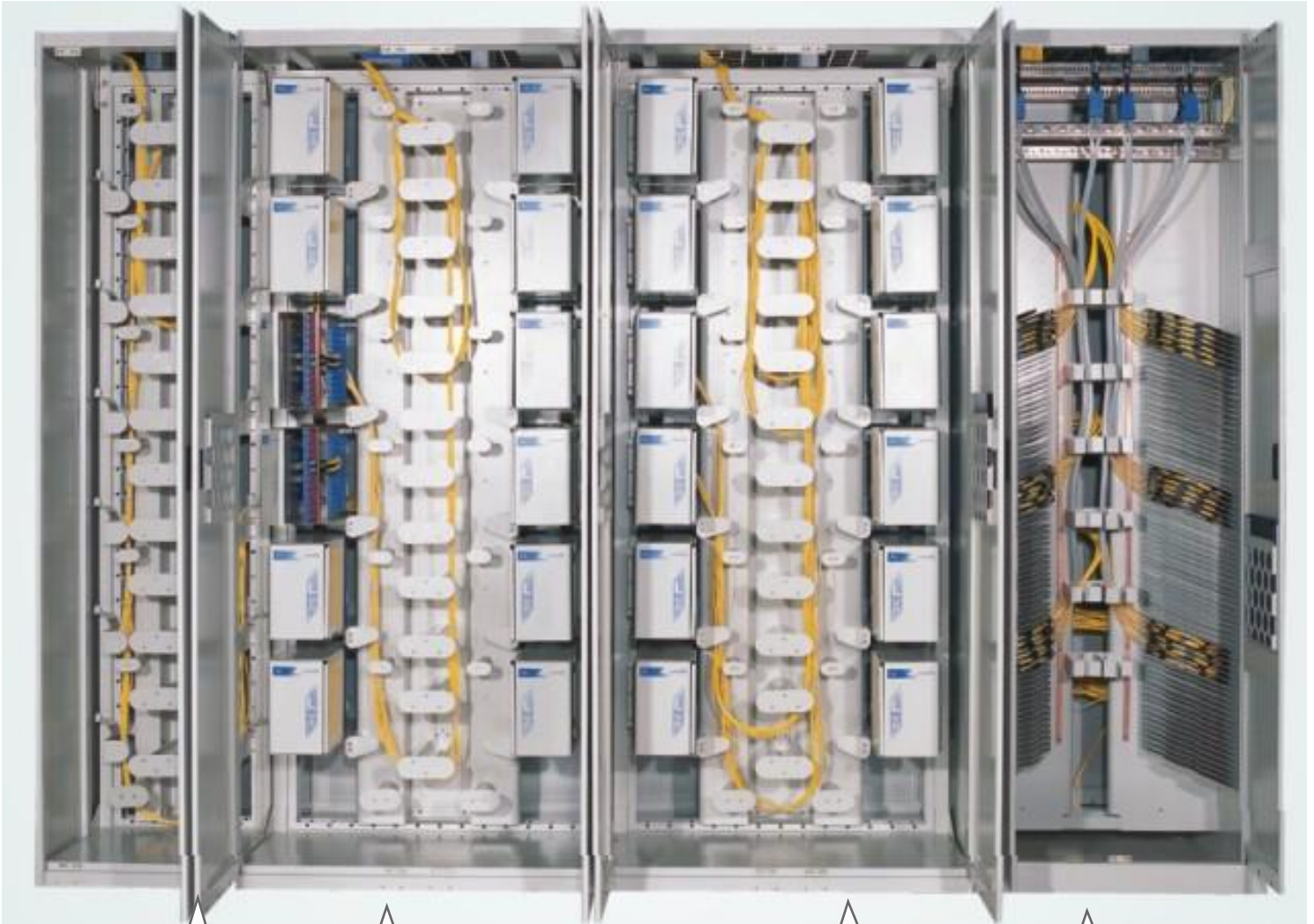


Optical Fiber Distribution Frame

(Long Xing Ref: GPX82-6B)



**Fiber Storage
Frame**

**Expansion
Distribution**

**Basic Distribution
Frame**

**Integrated
Splice Frame**

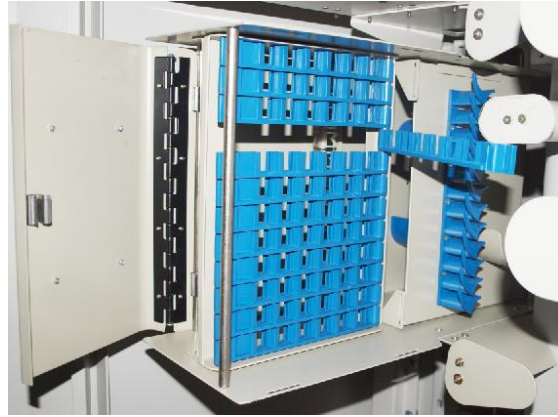
Updated on 13 Aug, 2011

All drawings, designs, specifications, plans and particulars of weights, size and dimensions contained in the technical or commercial documentation of LongXing is indicative only and shall not be binding on LongXing or be treated as constituting a representation on the part of LongXing.

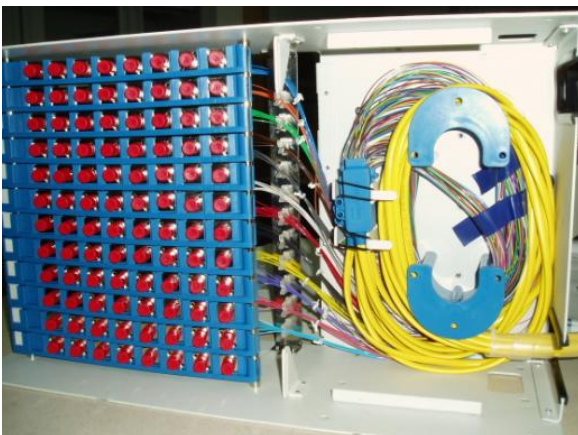
Descriptions:

- The combination consists of basic frame, expansion frame, integrated splice frame and fiber storage frame (custom combinations available).
- Hierarchical structure with the advantages of good performance of installation, maintenance and operational efficiency.
- This frame is suitable for large-capacity fiber optic into the client side management and business development needs.
- Modular design:
 - Integrated splice frame comprises cable inlet systems (which provide strong fixing units for outdoor cables), large amount of splice tray slots (both left and right rides).
 - Optical distribution frame is comprised of optical distribution module, fiber splice tray module, rear horizontal fiber support groove.
 - Fiber storage frame contains fiber winding shaft and rear horizontal fiber support groove.
 - The rear horizontal fiber support grooves of optical distribution frame and fiber storage frame connect directly. The rear horizontal fiber support grooves connect between distribution frame and splice frame through the eyelet on the right of splice frame.
 - The distribution modules have the options of 72 cores and 96 core modules.
 - At the back of each optical distribution frame, opposite to the two fiber distribution modules at left and right of frame front, a fiber support channel is equipped to facilitate fiber jumping between units, as well as the direct jumping between frames without passing frame top. Common optical distribution frame does not have such advantage.
 - According to customers' needs, fiber support channel is provided for both single-layered structure and double-layered structure.
 - Enough space for fiber support channel, convenient for maintenances and operations.
 - According to customers' needs, optic cable inlet device is provided for both single-layered structure and double-layered structure

Distribution Modules Guide (72 core and 96 cores)



- Fiber distribution module (72Fo module);
- 6-position adapter manager is adopted;
- Symmetrically divided into left and right modules.



- Fiber distribution module (96Fo module);
- 8-position adapter manager is adopted;
- Symmetrically divided into left and right modules.

Updated on 13 Aug, 2011

All drawings, designs, specifications, plans and particulars of weights, size and dimensions contained in the technical or commercial documentation of LongXing is indicative only and shall not be binding on LongXing or be treated as constituting a representation on the part of LongXing.

The fiber route at the rear side of the frames



Rear fiber jumping and pigtail passage (double layer)



Pigtail passage

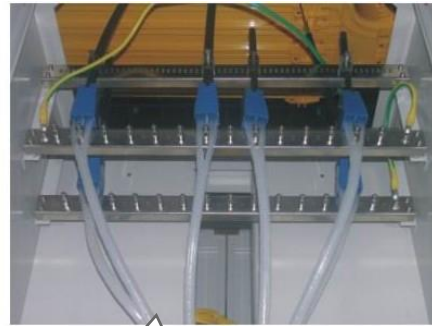


Fiber jumping passage

Fiber inlet systems for fixing the incoming outdoor cables and provide earth protections.



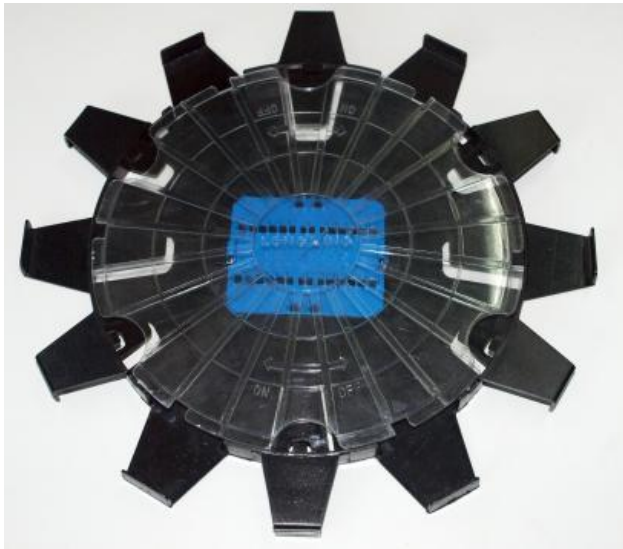
Optic cable inlet (single-layered structure)



Optic cable inlet (double-layered structure)

Updated on 13 Aug, 2011

All drawings, designs, specifications, plans and particulars of weights, size and dimensions contained in the technical or commercial documentation of LongXing is indicative only and shall not be binding on LongXing or be treated as constituting a representation on the part of LongXing.



24 Cores Heat Shrink Tube Holders



12 Cores Heat Shrink Tube Holders

- The UFO splice tray offers options for capacity of 12 cores and 24 cores splicing (by using different heat shrink tube holders).
- Directionless splice tray can be removed out freely to facilitate user's maintenance.
- Surplus fiber and pigtail are wound twice in inner circle and outer circle. The surplus length of fiber and pigtail are long enough to move the splice tray onto worktable for splice when the fiber and pigtail in the outer circle are loosed.

Dimensions and Capability:

Description	Dimensions H*W*D(mm)	Capacity	Remark
Fiber Storage Frame	2200*480*700		UFO tray and 6-position adapter plastic manager are adopted. 72cores/units
Integrated Splice Frame	2200*720*700	12cores/tray, 144trays/frame	
Basic Distribution Frame	2200*900*700	72cores/unit, 864cores(12units)/frame	
Expansion Distribution Frame	2200*900*700	72cores/unit, 864cores(12units)/frame	

Operation conditions:

- Temperatures: -5°C ~ 40°C
- Humidity: ≤85% at 30°C
- Air Pressure: 70kPa – 106kPa

Contact:

International Trade Departmen
18, Anju Road, Beilun District, Ningbo, China
Direct: +86 574 87917627
Email: info@nblxtelecom.com
Web: www.lxtelecom.com

Updated on 13 Aug, 2011