

Optical Fiber Distribution Frame

(LongXing Ref: GPX82-6A)

This frame is the latest hierarchical, frame-separated, stereo patch cord, high density and large capacity distribution frame.

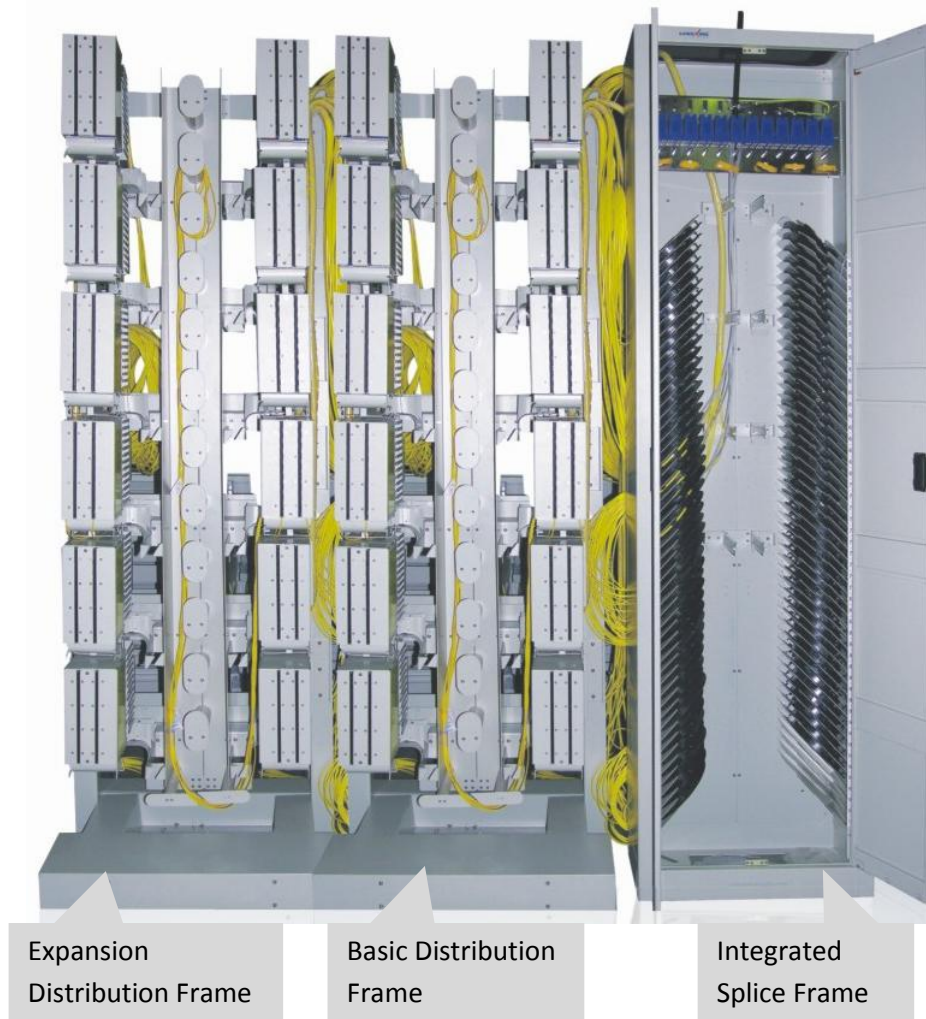
Closed Type:



Generated on 10 Oct, 09

All drawings, designs, specifications, plans and particulars of weights, size and dimensions contained in the technical or commercial documentation of LongXing is indicative only and shall not be binding on LongXing or be treated as constituting a representation on the part of LongXing.

Open Type:



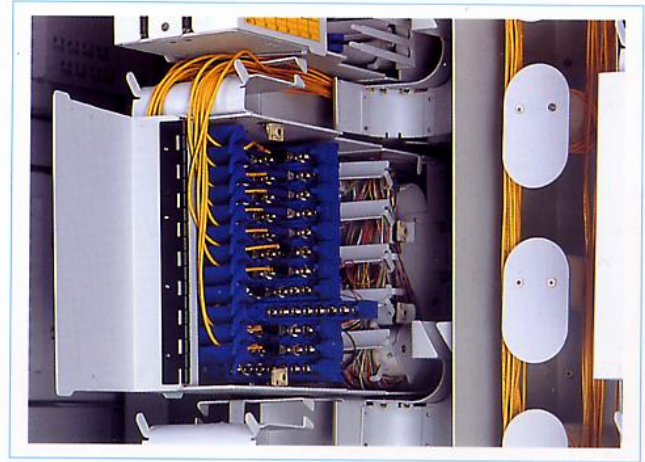
Descriptions:

- Splice and distribution are separated;
- This frame comprises optical fiber distribution frame(basic and expansion frames), integrated splice frame;
- Compact structure and distinct layer for convenient management;
- Both closed type and open type frames can be selected.
- High density and big capacity: 1200cores/frame(Height: 2200mm);
- Full length control of curvature: the curvature radius is ensured at over 40mm at any position of fiber so as to minimize loss.
- Two kinds of horizontal fiber support grooves:
 - Double-layered structure, the top is for optical fiber patch cord passing, below is for pigtail;
 - Single-layered structure.
- Enough space for fiber support channel, convenient for maintenances and operations.

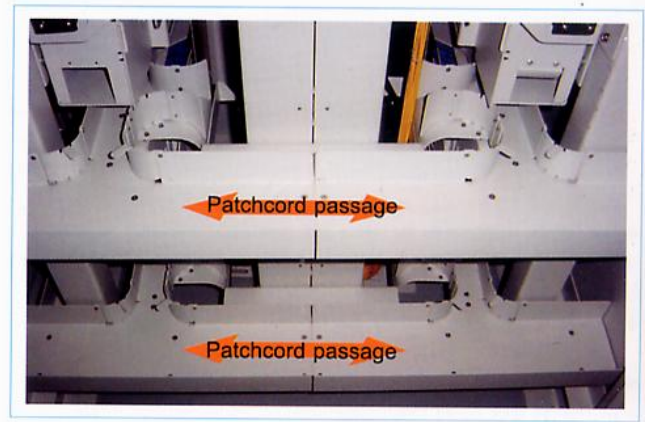
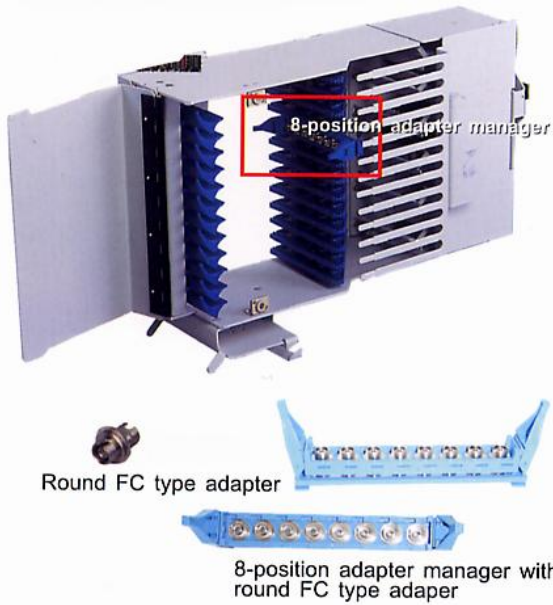
Generated on 10 Oct, 09

All drawings, designs, specifications, plans and particulars of weights, size and dimensions contained in the technical or commercial documentation of LongXing is indicative only and shall not be binding on LongXing or be treated as constituting a representation on the part of LongXing.

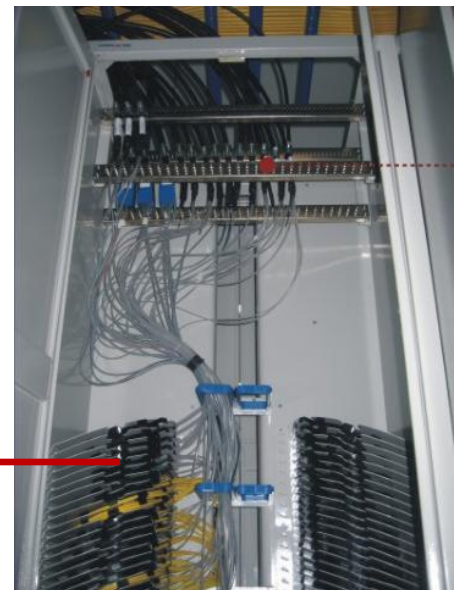
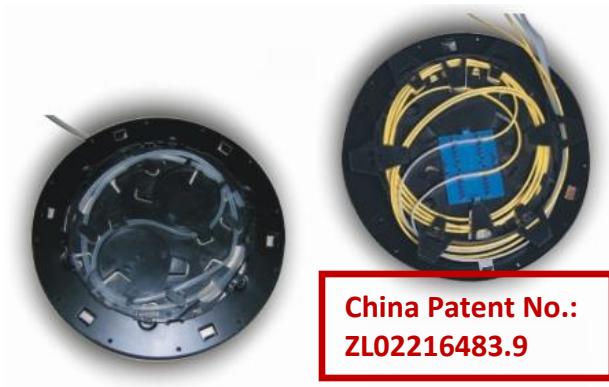
- 8-position adapter slot is adopted;
- Accommodates round FC type adapter;
- Capacity per unit: 96 cores.



Optical distribution unit without fiber winding shaft



- Cable inlet can subject to different requires, divided into single-layered and double-layered;
- Frisbee style (UFO style) splice tray is adopted, double layered structure, closed protection, capacity of 12 cores per tray. Frame-retardant materials used. Curvature radius of fiber over 40mm.



Generated on 10 Oct, 09

All drawings, designs, specifications, plans and particulars of weights, size and dimensions contained in the technical or commercial documentation of LongXing is indicative only and shall not be binding on LongXing or be treated as constituting a representation on the part of LongXing.

Operation conditions:

- Temperatures: -5°C ~ +40°C
- Humidity: ≤85% (at 30°C)
- Air Pressure: 70kPa – 106kPa

Dimensions and Capability:

Frame Type	Description	Dimensions H*W*D(mm)	Capacity (Cores)	
			Per unit	Per frame
Closed Type	Integrated Splice Frame	2200*600*350	12	1152-1200
	Basic Distribution Frame	2200*900*700	96	1152
	Expansion Distribution Frame	2200*900*700	96	1152
Open Type	Integrated Splice Frame	2200*600*318	12	1152-1200
	Basic Distribution Frame	2200*760*636	96	1152
	Expansion Distribution Frame	2200*760*636	96	1152

Contact:

International Trade Department
18, Anju Road, Beilun District, Ningbo, China
Direct: +86 574 87917627
Email: info@nblxtelecom.com
Web: www.lxtelecom.com

Generated on 10 Oct, 09

All drawings, designs, specifications, plans and particulars of weights, size and dimensions contained in the technical or commercial documentation of LongXing is indicative only and shall not be binding on LongXing or be treated as constituting a representation on the part of LongXing.