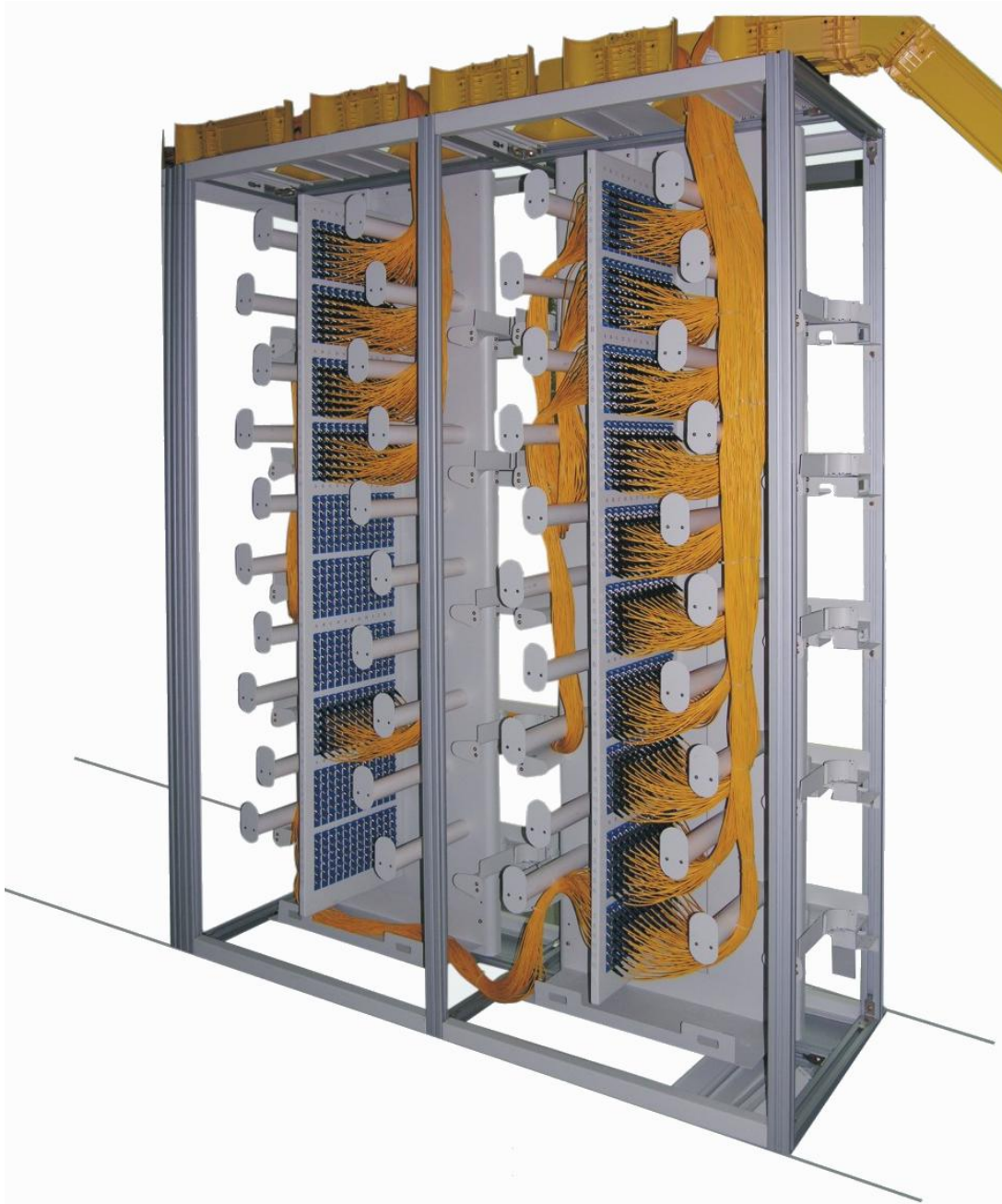


# Optical Fiber Dispatch Frame

(LongXing Ref: GPX82-6T)



Generated on 12 Oct 09

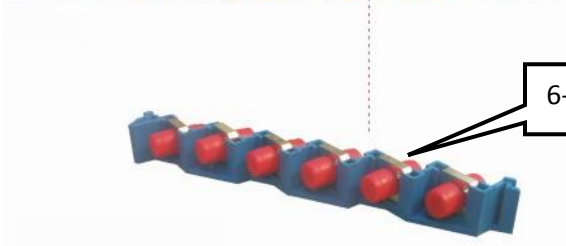
All drawings, designs, specifications, plans and particulars of weights, size and dimensions contained in the technical or commercial documentation of LongXing is indicative only and shall not be binding on LongXing or be treated as constituting a representation on the part of LongXing.

## Descriptions:

- This frame comprises basic and expansion frames;
- Compact structure and distinct layer for convenient management;
- This frame is suitable for both common bundle cables and ribbon type cables;
- High density and big capacity: 720cores/frame(Height: 2200mm);
- Horizontal fiber support groove: double-layered structure, the top is for optical fiber patch cord passing, below is for pigtail;
- 6-position adapter slot is adopted, no screws need for installing any type adapters.



Horizontal fiber support groove



6-position adapter slot

## Operation conditions:

- Temperatures:  $-5^{\circ}\text{C} \sim 40^{\circ}\text{C}$
- Humidity:  $\leq 85\%$  (at  $30^{\circ}\text{C}$ )
- Air Pressure: 70kPa – 106kPa

## Dimensions and Capability:

Dimensions H*W*D (mm)	Capacity (cores)
2600*300*300	72
2200*300*300	60
2000*300*300	48

## Contact:

International Trade Department  
18, Anju Road, Beilun District, Ningbo, China  
Direct: +86 574 87917627  
Email: [info@nblxtelecom.com](mailto:info@nblxtelecom.com)  
Web: [www.lxtelecom.com](http://www.lxtelecom.com)

Generated on 12 Oct 09

All drawings, designs, specifications, plans and particulars of weights, size and dimensions contained in the technical or commercial documentation of LongXing is indicative only and shall not be binding on LongXing or be treated as constituting a representation on the part of LongXing.